



HOW TO MAKE A GREENMAN PARADE AND EVENT PROP



**FESTIVAL
OF THRIFT**



www.lottiesmith.com

≡ EQUIPMENT ≡



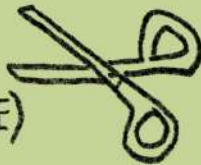
PENCILS

RULER

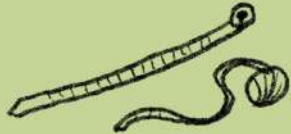


SCISSORS

(OR CRAFT KNIFE)



TAPE



CABLE TIES (OR STRING)

GLUE

(PVA OR HOT GLUE)



PAINTS

(HOUSEHOLD/POSTER/ACRYLIC)

CHUNKY PEN



STAPLER

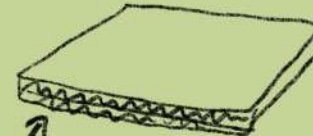
GLUE STICKS
AREN'T GREAT FOR THIS



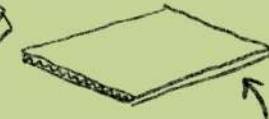
≡ MATERIALS ≡

CARDBOARD

(CORRUGATED LIKE DELIVERY BOXES)



↑
STRONG DOUBLE LAYER
BEST FOR BASE



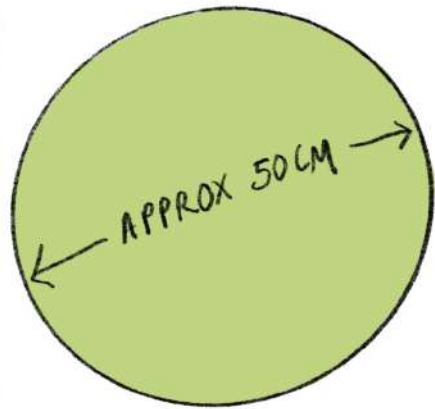
↑
THIN SINGLE
LAYER BEST FOR LEAVES

BAMBOO GARDEN CANE

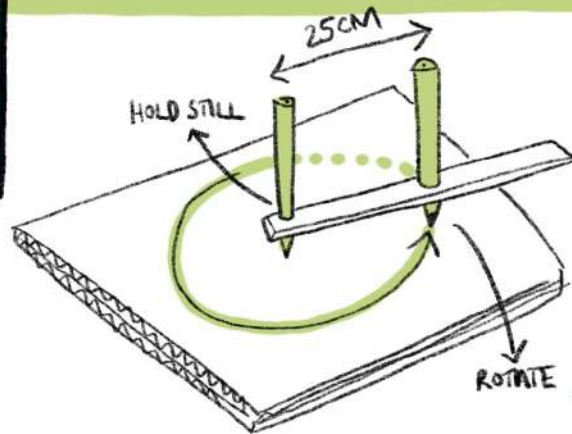
(OR OLD BROOM HANDLE)



ANY GREEN CARD OR
TISSUE PAPER.



1



- CUT OUT A LARGE CIRCLE FOR THE BASE (USE YOUR STRONGEST CARD)
- YOU CAN USE 2 PENCILS AND A STRIP OF CARDBOARD FOR A COMPASS.



2

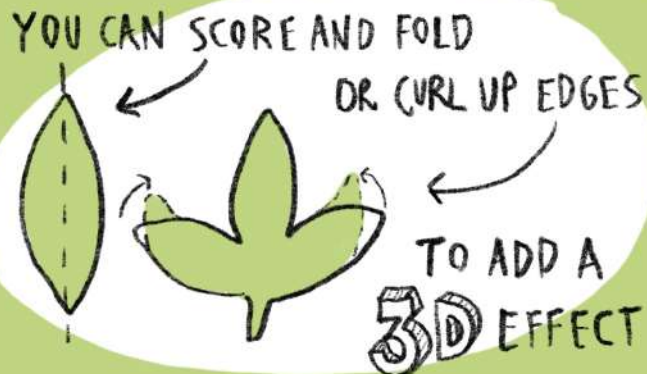


- PAINT LOTS OF DIFFERENT SHADES OF GREEN. (SOME OTHER COLOURS MIGHT BE USEFUL)



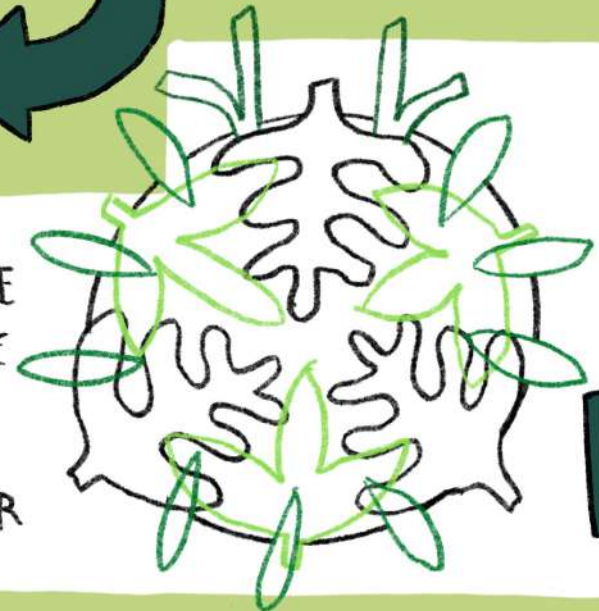
- USE A PENCIL TO DRAW LOTS OF DIFFERENT SHAPES AND SIZES OF LEAF AND THEN CUT THEM ALL OUT.

3



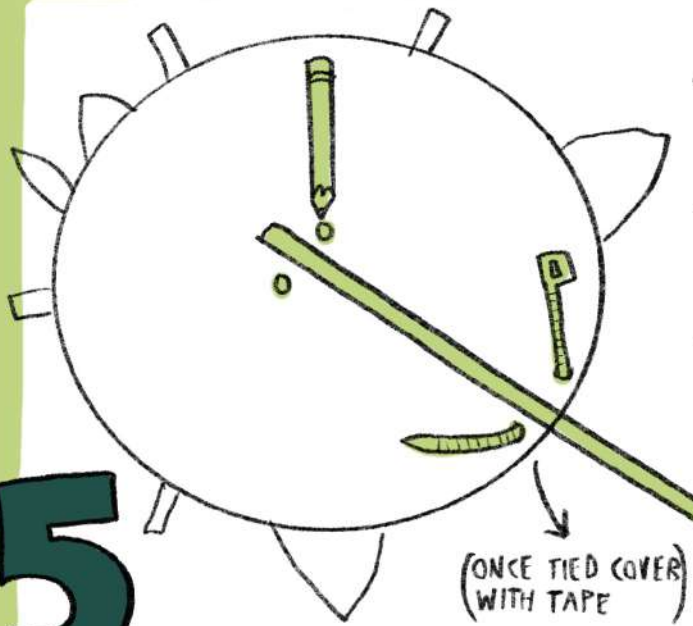
- ARRANGE AND THEN GLUE THE LEAVES AROUND THE CIRCULAR BASE.

- ONCE DRY FLIP OVER



4

5



- PLACE BAMBOO CANE AT LEAST HALF WAY ACROSS THE BACK OF YOUR BASE.
- USE A PENCIL TO MAKE A MARK EITHER SIDE OF IT, TOP AND BOTTOM
- PUSH A HOLE THROUGH TO THE OTHER SIDE ON EACH MARK. (USE THE PENCIL)
- THREAD A CABLE TIE THROUGH EACH PAIR TO FIX IN PLACE. (OR STRING)

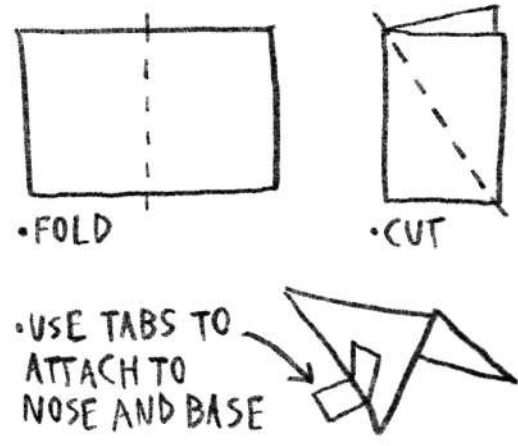
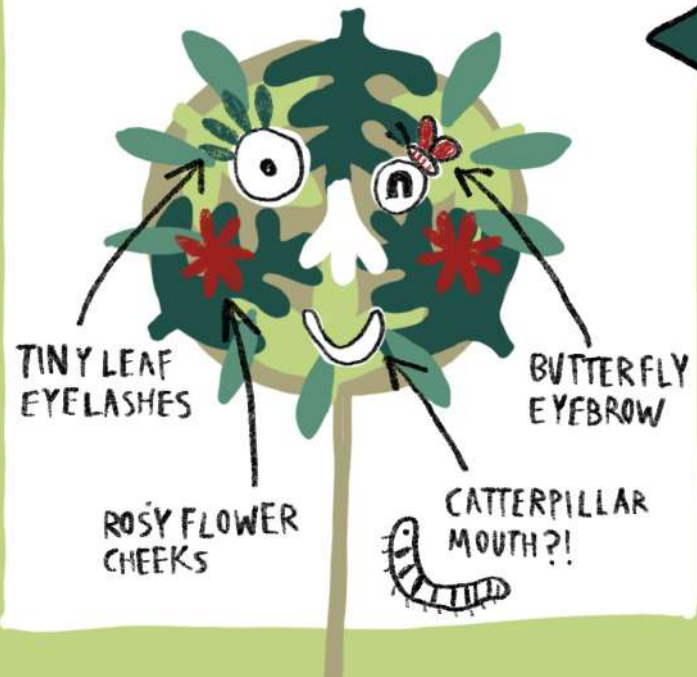
(ONCE TIED COVER WITH TAPE)

6

- FLIP BACK OVER
- USE A CONTRASTING COLOUR TO CUT OUT EYES, EARS AND MOUTH.



• IDEAS FOR FINISHING TOUCHES!



- FOLD
- CUT
- USE TABS TO ATTACH TO NOSE AND BASE

- YOU CAN USE A BIG MARKER PEN OR LITTLE PAINT BRUSH TO ADD DETAILS

MAYBE YOU COULD MAKE A 3D NOSE!